

IMDSERVER Intranet and Internet Services for Students

(Stephen Downey, January 2010)

Introduction

The IMDSERVER will allow you to create dynamic scripts with database connectivity as well as static Webpages. It will give you access to a **WorkSpace** area for the preparation of all your coursework. After assessment by staff you can then transfer your assessed work to the **Showcase** folders for viewing on the Internet. This gives you the opportunity to incorporate any feedback from staff into the final version of your work before anyone on the Internet can view it. Staff will only be assessing the work on the **WorkSpace** area. As it is controlled by you, it is necessary to give you a username and password for the **WorkSpace** and **Showcase** folders so you can decide when and who can see your files.

The username will be your student B-code (format B00xxxxxx) and the password will be unique to you for the IMDSERVER.

This username/password combination will allow users to place data into either a **WorkSpace** (Intranet) or **Showcase** (Internet) via FTP and make use of MySQL.

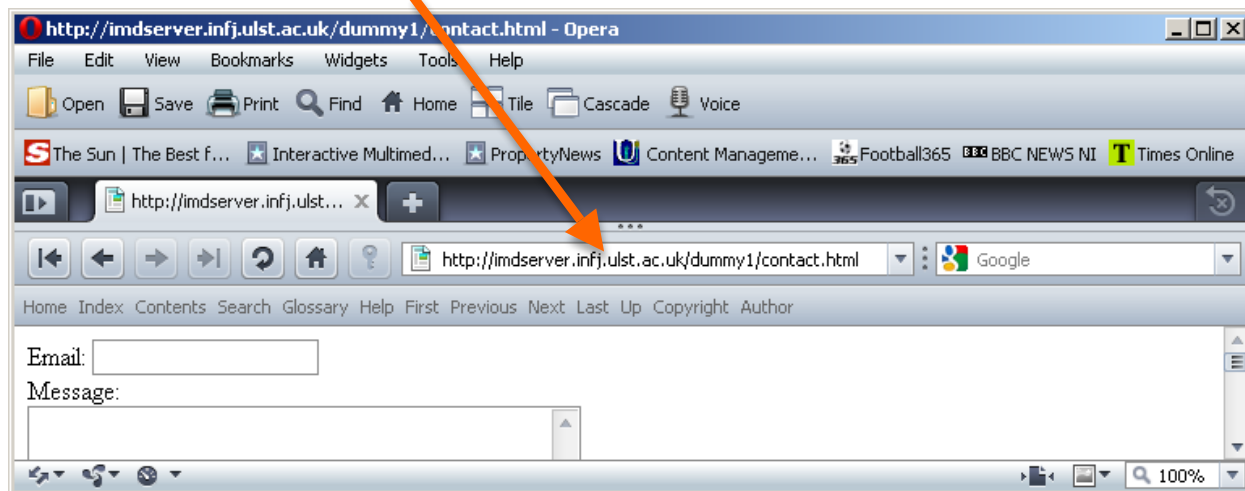
In placing the data into a **Showcase** (Internet) folder users will make the data available to the world.

In placing the data into a **WorkSpace** (Intranet) folder users will ensure that the data is private only to those users who have the Intranet username and password.

You MUST NOT share your password with anyone else !!

Examples

Viewing **Showcase** (Internet) data:

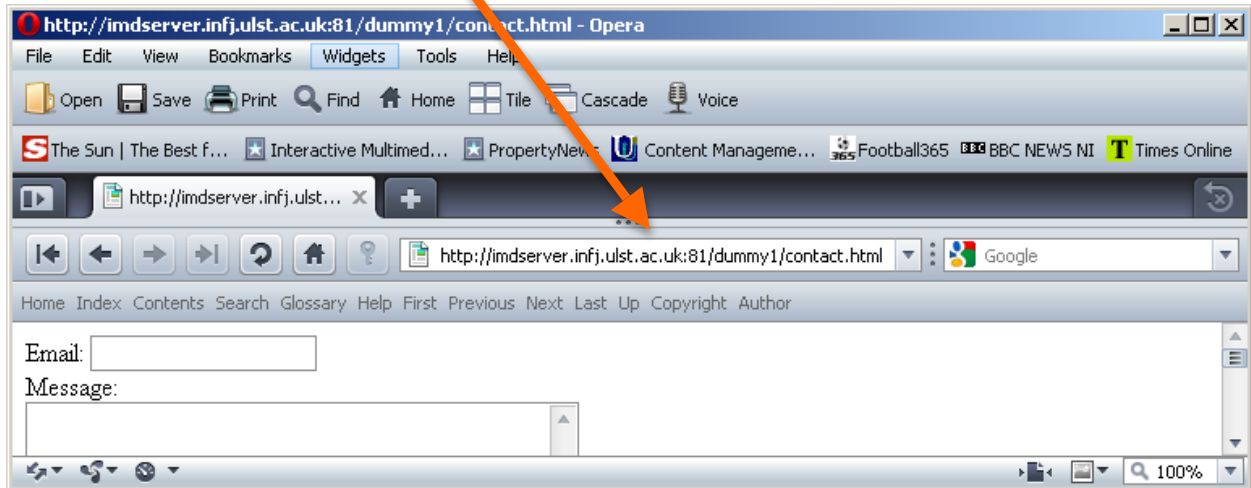


Server: <http://imdservr.infj.ulst.ac.uk>

User: dummy1 (to browse your files replace dummy1 with your B-code)

File: contact.html

Viewing **Workspace** (Intranet) data:



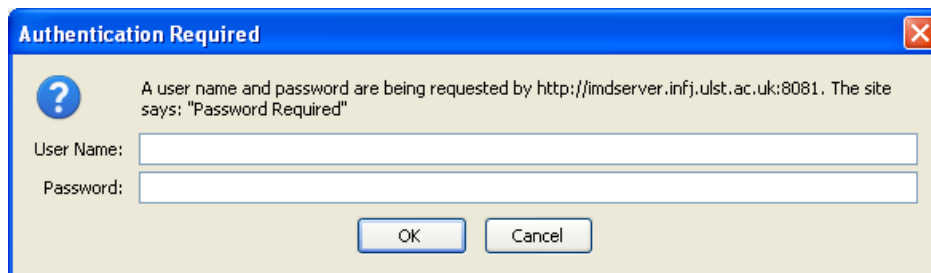
Server: http://imdservr.infj.ulst.ac.uk

Workspace (Intranet) port 81

User: dummy1 (to browse your files replace dummy1 with your B-code)

File: contact.html

In the **Workspace** (Intranet) scenario you will be required to enter a specific username and password before viewing the data:



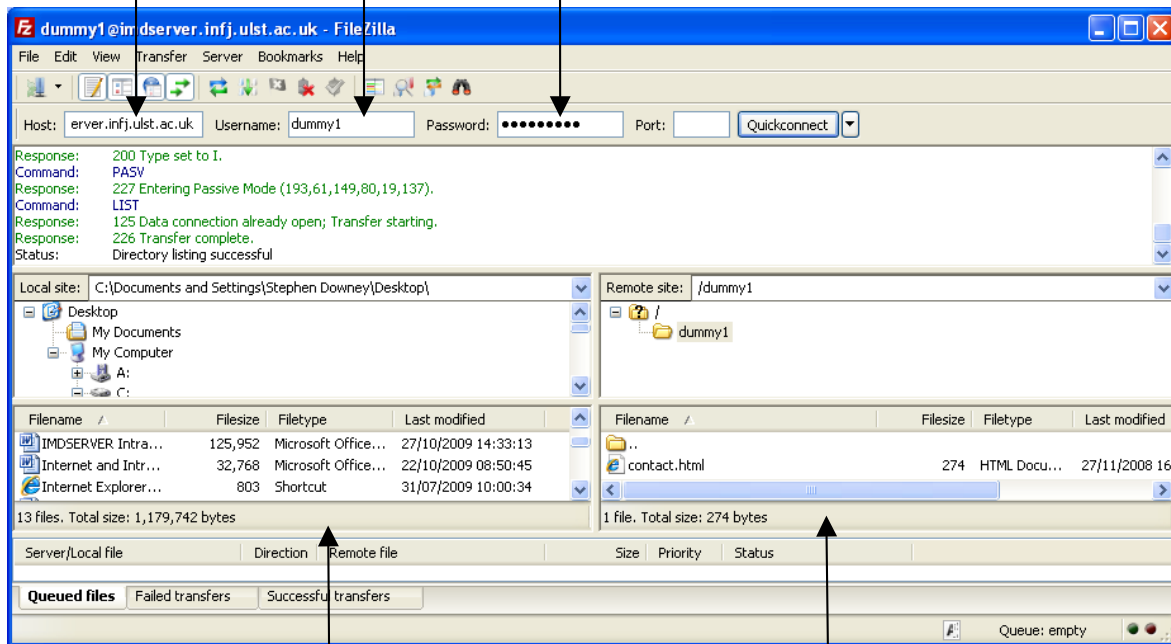
This information is unique to the **Workspaces** (Intranet) and will be provided for you. It must remain private for the groups who use the Intranet and will be changed if the need arises.

This is not the same as the personal server username and password you are provided with.

Using Filezilla FTP software to place data into Showcases (Internet) and Workspaces (Intranet)

The following example shows how to place data into a **Showcase** folder:

http://imdsrver.infj.ulst.ac.uk B-code password

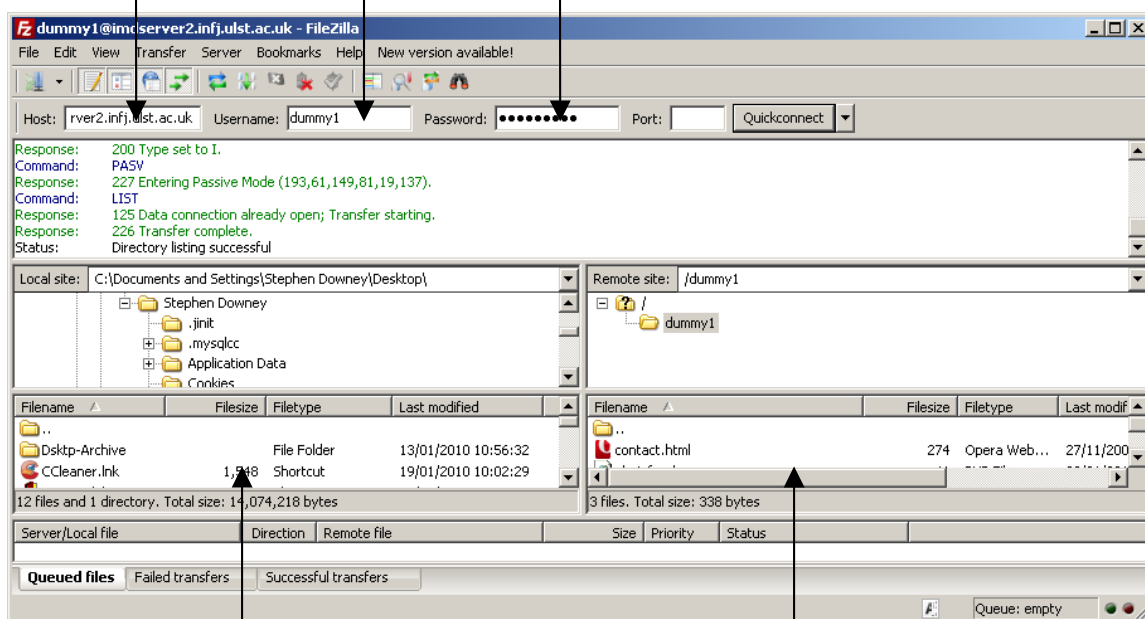


local data

server data

The following example shows how to place data into a **WorkSpace** (Intranet) folder:

imdsrver2.infj.ulst.ac.uk B-code password



local data

server data