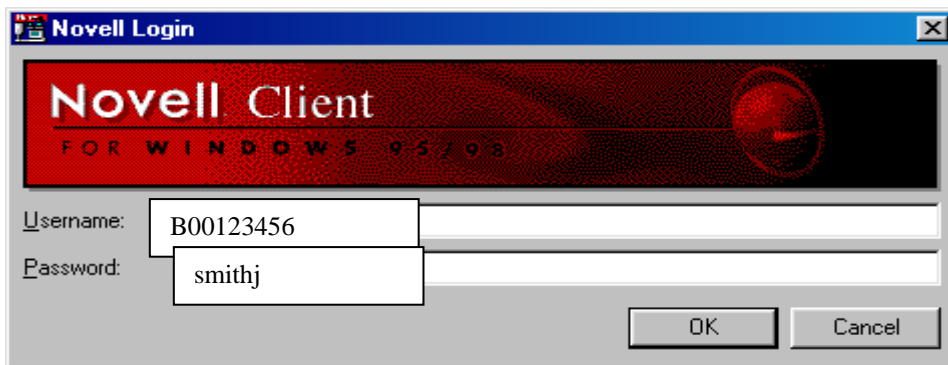


When you turn on any PC in the IMD Lab, you will notice a "Login" window very similar to this one. Here you enter your student number for Username and a password given to you by the IT Support Staff or your Course Lecturer. A second window will "pop-up" if your login is successful. You can just press the enter key here.

BSc (Hons) Interactive MultiMedia Design

YEAR TWO STUDENT INFORMATION SHEET FOR LABORATORY 16E28

Student Name: **John Smith**
Programme Code: **2081**



The above details are only applicable to computers in Block 16 and **do not** apply to the computers in the LRC (Library)

In this section we see information on your personal P: Drive which is provided for you when you login to Novell. There will also be a public_html folder created for you to "host" internet files and folders. You can access your P: Drive via Windows Explorer.

If you have internet files or folders created in your public_html folder these can be "browsed" via Internet Explorer or FireFox. For example,

<http://ijsr32.infj.ulst.ac.uk/~B00123456.20812/home.html>

If you create an index.html file then access to your website would be,

<http://ijsr32.infj.ulst.ac.uk/~B00123456/>
(ijsr32 is just the name of the web server)

Note: P:/public_html information is also viewable in a web browser via the student portfolios link on the IMD website

imdweb.infj.ulster.ac.uk

Novell Web Services,
Personal Home Folder
Place Web documents in
Your Personal Webspace

P:\
P:\public_html
<http://ijsr32.infj.ulst.ac.uk/~B00123456.20812/>

FTP is a program that allows you to transfer files and folders to your Personal P: Drive if you are not able to do so via Windows Explorer (you may be in the LRC, for example, or at home).

In the IMD Lab use the FTP program FileZilla to do this.

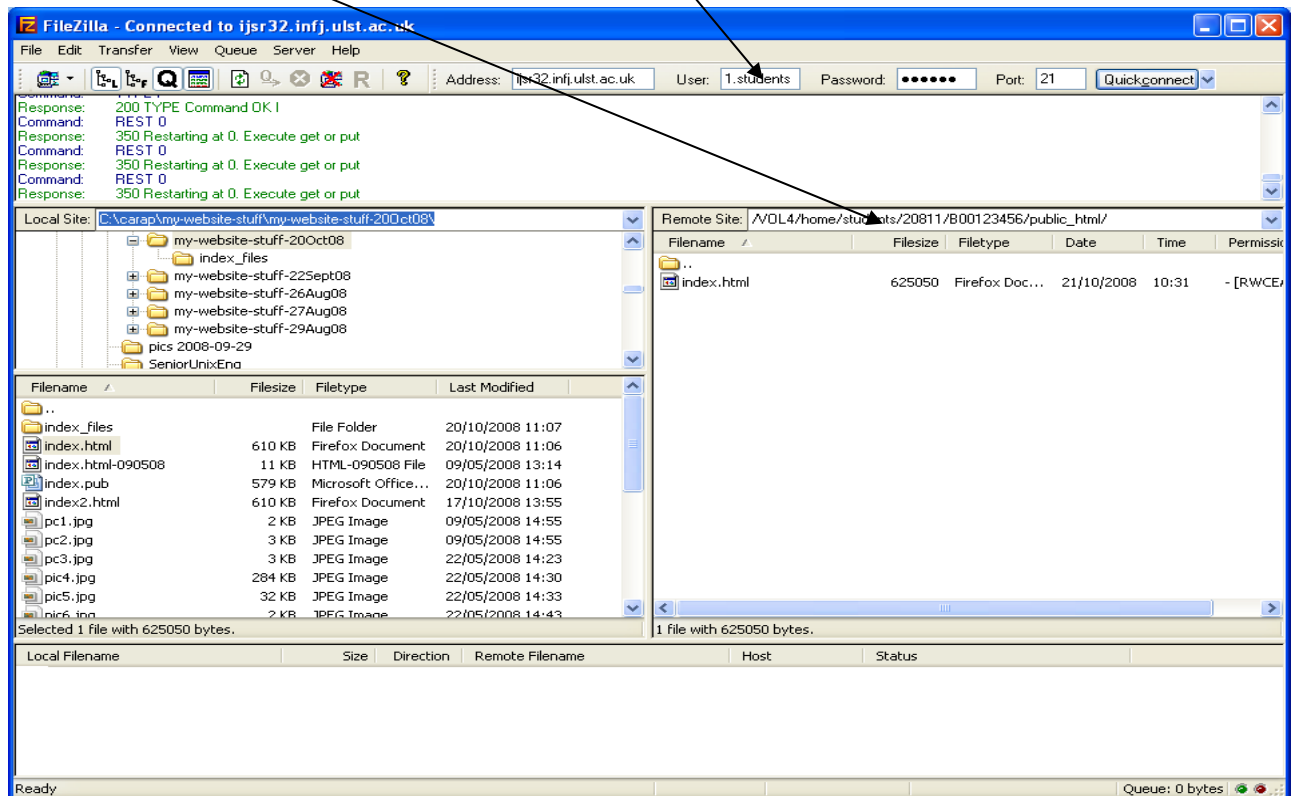
You just add in your server name and other details and then choose to "QuickConnect". At this point you should see two windows – one with your local C: Drive data on the left and the other with your P: Drive data on the right. Right-clicking on a file or folder will allow you to upload (or download) to and from your Drives.

Novell FTP Service (available both within and outside the University) :-

Host = ijsr32.infj.ulst.ac.uk
User Name = B00123456.20812.students
Password = smithj

This will become
/VOL5/home/students/20812/B00123456/public_html/

Username
B00123456.20812.students



Your webpage is visible locally and external to the University
Web scripting is not available on your P: Drive.

In some classes in the IMD Lab you will be required to create websites using either Apache Web Server or IIS Web Server. To do this you will need to store any files you create in the relevant folders, outlined below. Any web information created in this way cannot be viewed outside the IMD Lab.

This is not the same as those files residing on your P: Drive.

Please refer to the following web site for examples,

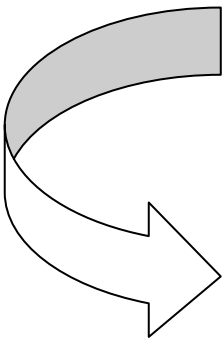
<http://193.61.148.61/index.htm>

(or <http://localhost/index.htm> when seated at your PC in the IMD Lab)

Other useful information,

- Printers are available in 16E28/16G26/16C26. Colour printing also in 16E28.
- FTP, Netstorage, Wireless Networking, changing your Novell password and other useful information available at <http://193.61.130.50>
- The following folders are the destinations for data storage on your PC,
For Apache → C:\Apache\Apache2\htdocs and/or \cgi-bin
For IIS → C:\Inetpub\wwwroot\anyfolder or anyfilename
Data is visible only within the university.
- Use the PC desktop link “Localhost” to view web programming samples.
- **Remember to backup any data stored on Drive C: before you logout.**

IMD Second Year student notes - IMDSERVER



IMDSERVER is a Web Server Platform which accommodates both Apache and IIS. It's main objective is to allow any web sites created to be "viewable" from outside the University. It also allows dynamic webpage scripting – something which your P: drive can't handle. The following link gives examples of pages created on this server and other related information,
<http://193.61.130.252/tutorial/techlist.html>

- IMDSERVER is used primarily by students who want their data to be visible from outside the University. Special emphasis is placed on data that makes use of database connectivity, for example using MySQL.
- Each second year student receives IMDSERVER and MySQL accounts on the server.

Once you have tested your website design in the IMD Lab you will probably want to host it on this server and this is where FTP comes in. You can use FileZilla in the same way as for your P: Drive to upload your data.

- Users must FTP data to their account space on the server as there is no Telnet service. To FTP to your account,

Hostname	imdservr.infj.ulst.ac.uk
Username	B00123456
Password	smithj

- To view data stored in your IMDSERVER account point your web browser to,
<http://imdservr.infj.ulst.ac.uk/B00123456/> (index.html is the default)
or,
<http://imdservr.infj.ulst.ac.uk/B00123456/filename>
(filename is created by you and is any file that can be viewed on the web)
 - Users are recommended to refer to <http://193.61.130.252/tutorial/techlist.html> for further information.
- 